



COMBINATION NIPPLES

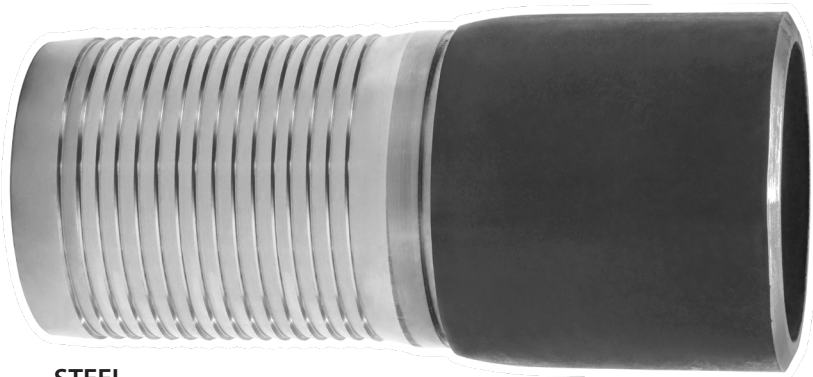
CRIMPTEK - WELD BEVEL
STEEL & SS 316

FEATURES & APPLICATIONS:

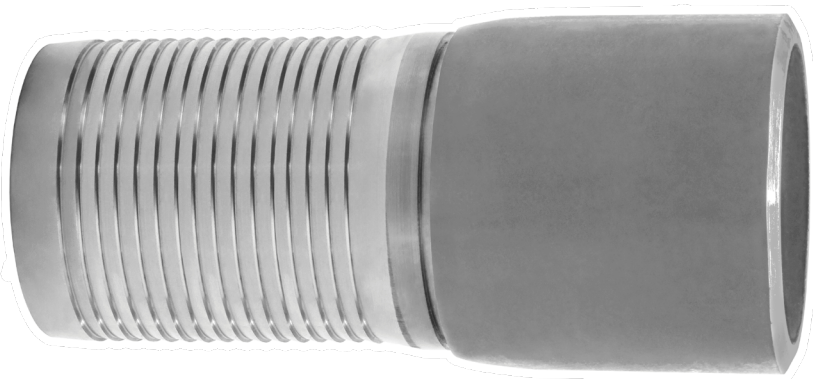
- Low pressure fluid transfer, suction and discharge. Working pressures may vary with hose type and clamping system used to install couplings.

- Combination Nipples are recommended for low pressure discharge and suction service for compatible liquids. NOT for compressible products such as Air, Nitrogen and Steam.

*All blank end & grooved combination nipples are made using Schedule 40 pipe



STEEL



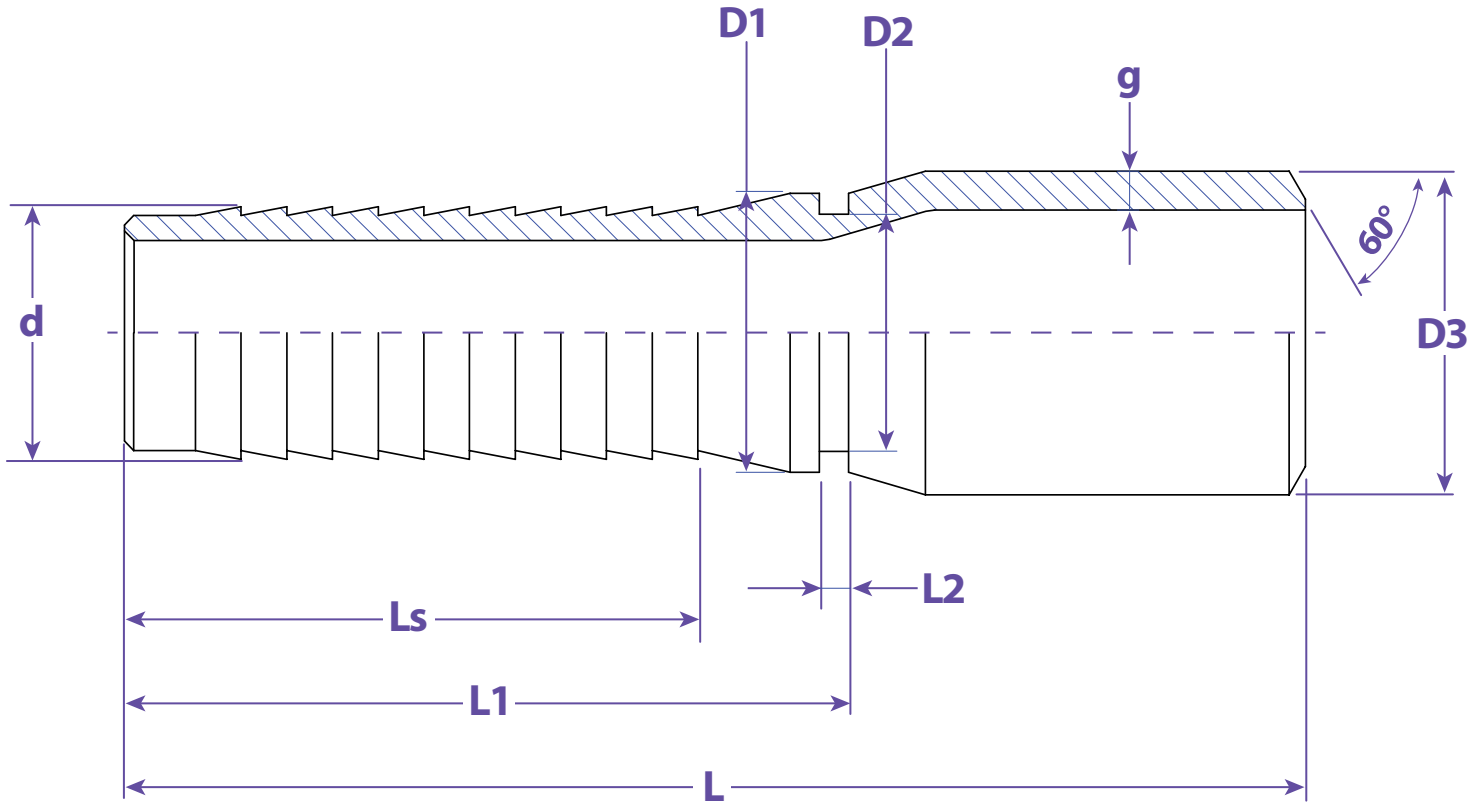
316 SS

STEEL & STAINLESS 316

SIZE	STEEL	316 SS
1"	SF100SBC	SF100SSB6C
1-1/4"	---	---
1-1/2"	SF150SBC	SF150SSB6C
2"	SF200SBC	SF200SSB6C
3"	SF300SBC	SF300SSB6C
4"	SF400SBC	SF400SSB6C
6"	SF600SBC	SF600SSB6C



Information contained on this page is for general information purposes only. Seal Fast Inc. assumes no responsibility for errors or omissions for this product.



Dimensions								
D	L	L1	Ls	D1	D2	d	g	Part #
1.3386	4.5276	2.6181	2.0079	1.2677	1.1693	1.0354	0.1339	SF100...
1.6811	4.5276	2.6181	2.0276	1.5197	1.4134	1.2795	0.1417	SF125...
1.9134	4.7638	2.7559	2.4016	1.6772	1.5630	1.5354	0.1457	SF150...
2.3937	5.2362	3.1299	2.5591	2.1850	2.0591	2.0315	0.1535	SF200...
2.8740	5.9055	3.5039	2.7559	2.7520	2.6102	2.5315	0.2047	SF250...
3.5000	7.0079	4.3701	3.5433	3.3150	3.1496	3.0315	0.2165	SF300...
4.5000	7.5984	4.6260	3.9764	4.3110	4.1575	4.0315	0.2362	SF400...
6.6260	9.3307	6.1417	5.3346	6.3583	6.1811	6.0472	0.2795	SF600...

TITLE COMBINATION NIPPLES - CRIMP STYLE - WELD BEVEL

<p>DISCLAIMER</p> <p>All drawings and specifications are subject to change without notice. Drawings represent general dimensions of our products. Seal Fast cannot guarantee the dimensions of the part will exactly match those in the drawing. This drawing is the property of Seal Fast Inc. Copying or reproduction of this drawing is expressly prohibited.</p>	<p>MATERIAL</p> <p>SFxxxxSBC Steel Tube SFxxxBSSC6 Stainless Tube 316</p>
<p>DRAWING NOT TO SCALE</p>	<p>PART # SF...SBC, BSS6C</p>

